

Great Dane Properties



Now Available:

Prime Corner Lot on busy State Route 13

Great Dane Properties is pleased to present:

315 – 317 North Meadow Street
Ithaca, NY 14850

For more information or to see this property contact:

Joe Draghi
Great Dane Properties

P.O. Box 212, McLean, NY 13102

607/838-3263 Fax 607/330-8300

www.greatdaneproperties.com

Great Dane Properties

Site information

Location: 315 & 317 N Meadow Street, Ithaca, NY 14850

Traffic Access: Easy access from State Route 13 (Meadow Street) and West Court Street

Visibility: Prime Corner location has lots of visibility

Traffic Count: **35,377 cars per day** (NYSDOT)

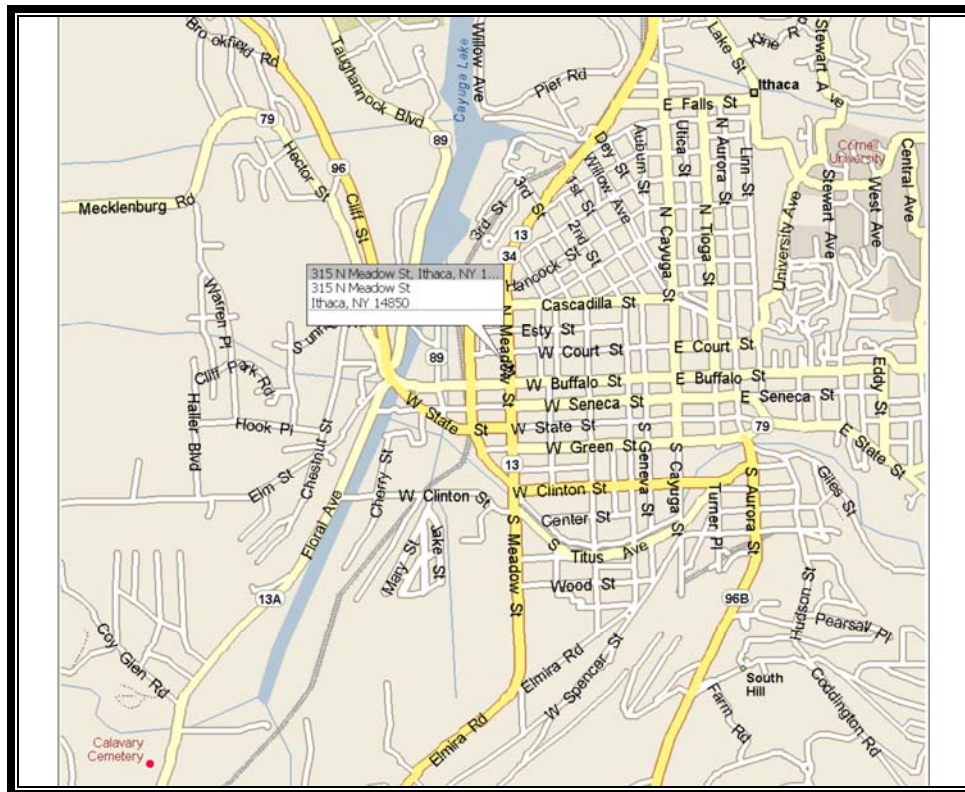
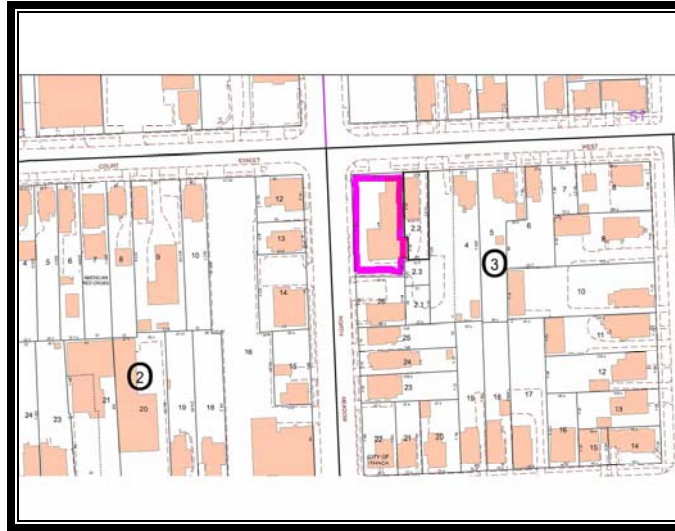
Available: ~ 400 sq ft

Asking rate: \$ 600.00/month gross



P.O. Box 212, McLean, NY 13102
607/838-3263 Fax 607/330-8300
www.greatdaneproperties.com

Great Dane Properties



P.O. Box 212, McLean, NY 13102

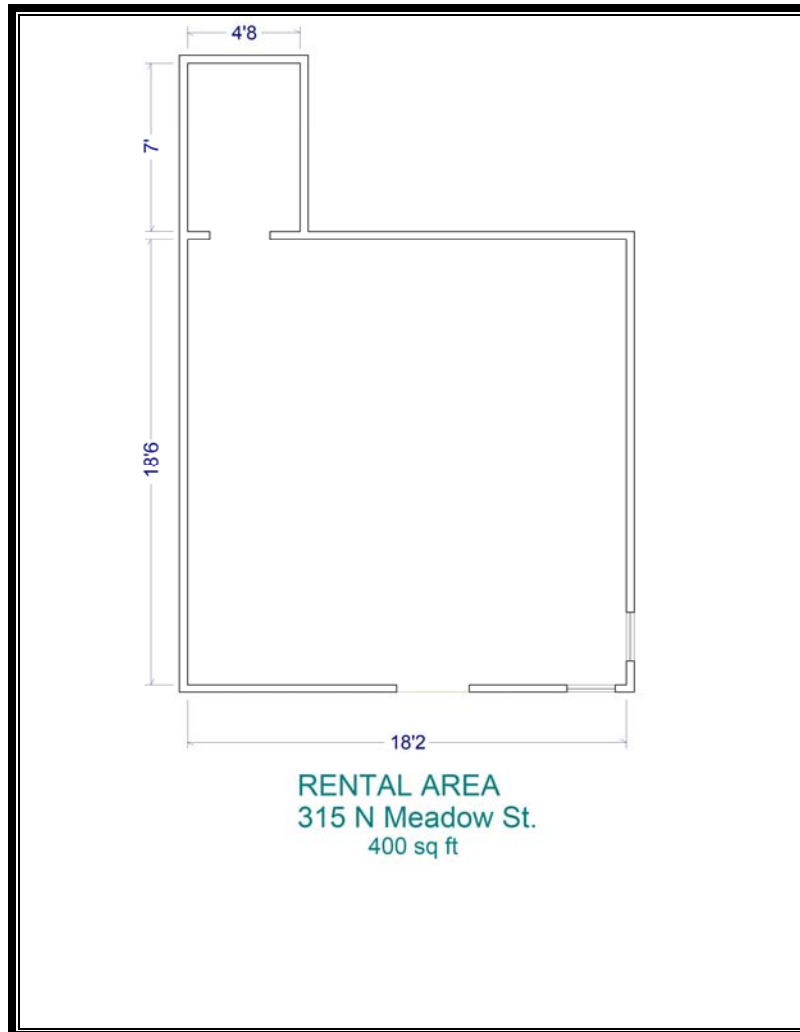
607/838-3263 Fax 607/330-8300

www.greatdaneproperties.com

Great Dane Properties

Building specifications

Gross Floor Area:	3,751 SF
Construction:	Block construction
Delivery Condition:	As Is
Utilities:	Gas/Electric 3 phase



All information furnished regarding buildings for sale, or lease is from sources deemed reliable, however, no warranty or representation is made as to the accuracy thereof and same is subject to errors, omissions, change of price, prior sale, lease, financing or withdrawal without notice.

P.O. Box 212, McLean, NY 13102

607/838-3263 Fax 607/330-8300

www.greatdaneproperties.com